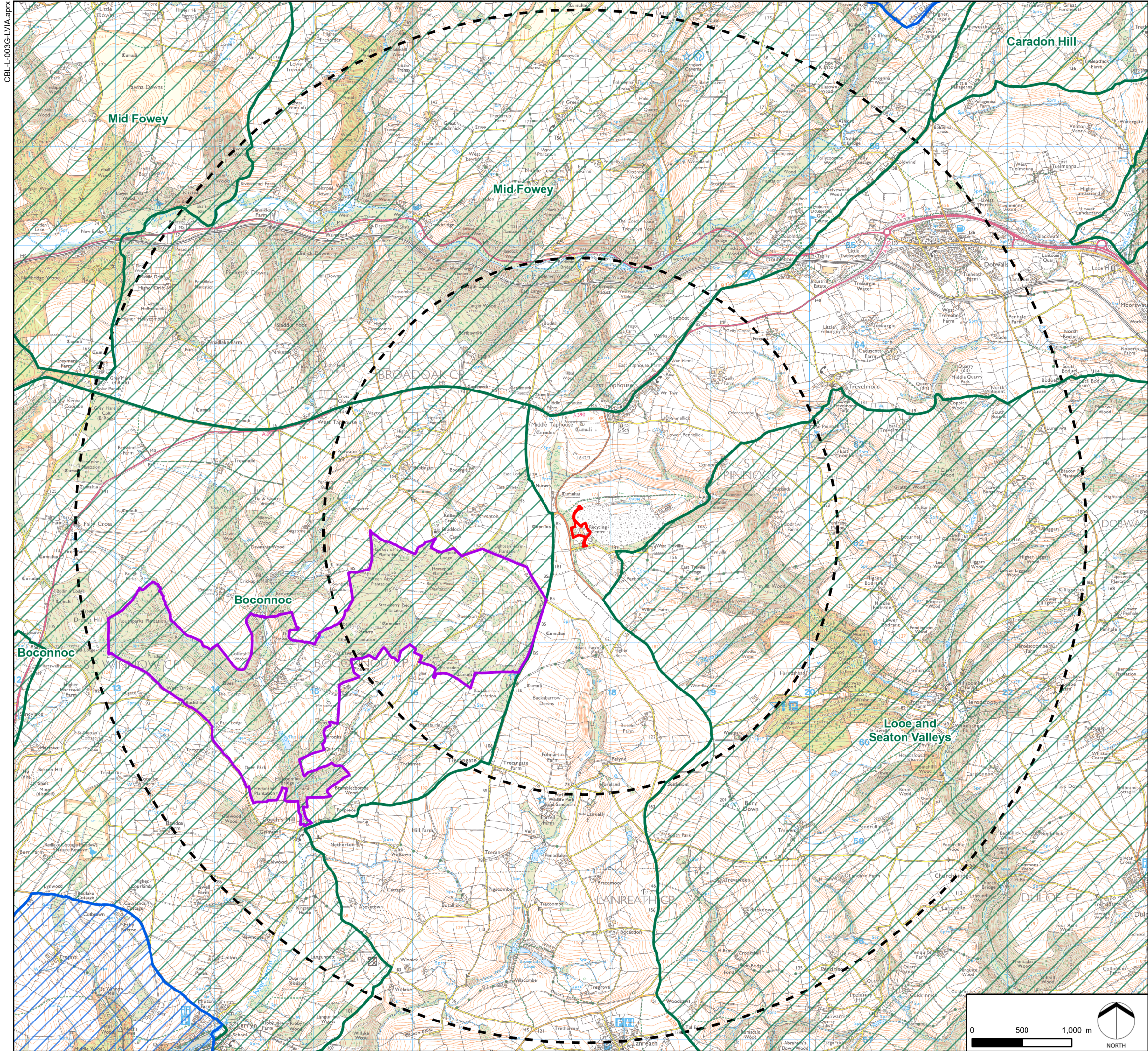


Figures






Figure 9.1	Landscape Context 5 Km
Figure 9.2	Aerial Photo 1 Km
Figure 9.3	Screening ZTV 5Km
Figures 9.4-9.7	Photosheets Viewpoints 1 – 4

CONNON BRIDGE

FIGURE 9.1
Landscape Context



KEY

-  Proposed Site Boundary
-  Distance Radii from Site (2.5, 5km)
-  Areas of Outstanding Natural Beauty (Cornwall)
-  Areas of Great Landscape Value
-  Boconnoc House and Gardens




Projected Coordinate System: British National Grid					
DATE	BY	PAPER	SCALE	QA	REV
DEC 2020	MP	A3	1:37,500	ME	-

CONNON BRIDGE

FIGURE 9.2

Aerial Photo

KEY

-  Proposed Site Boundary
-  Proposed Building Locations
-  1km Distance Radius from Site

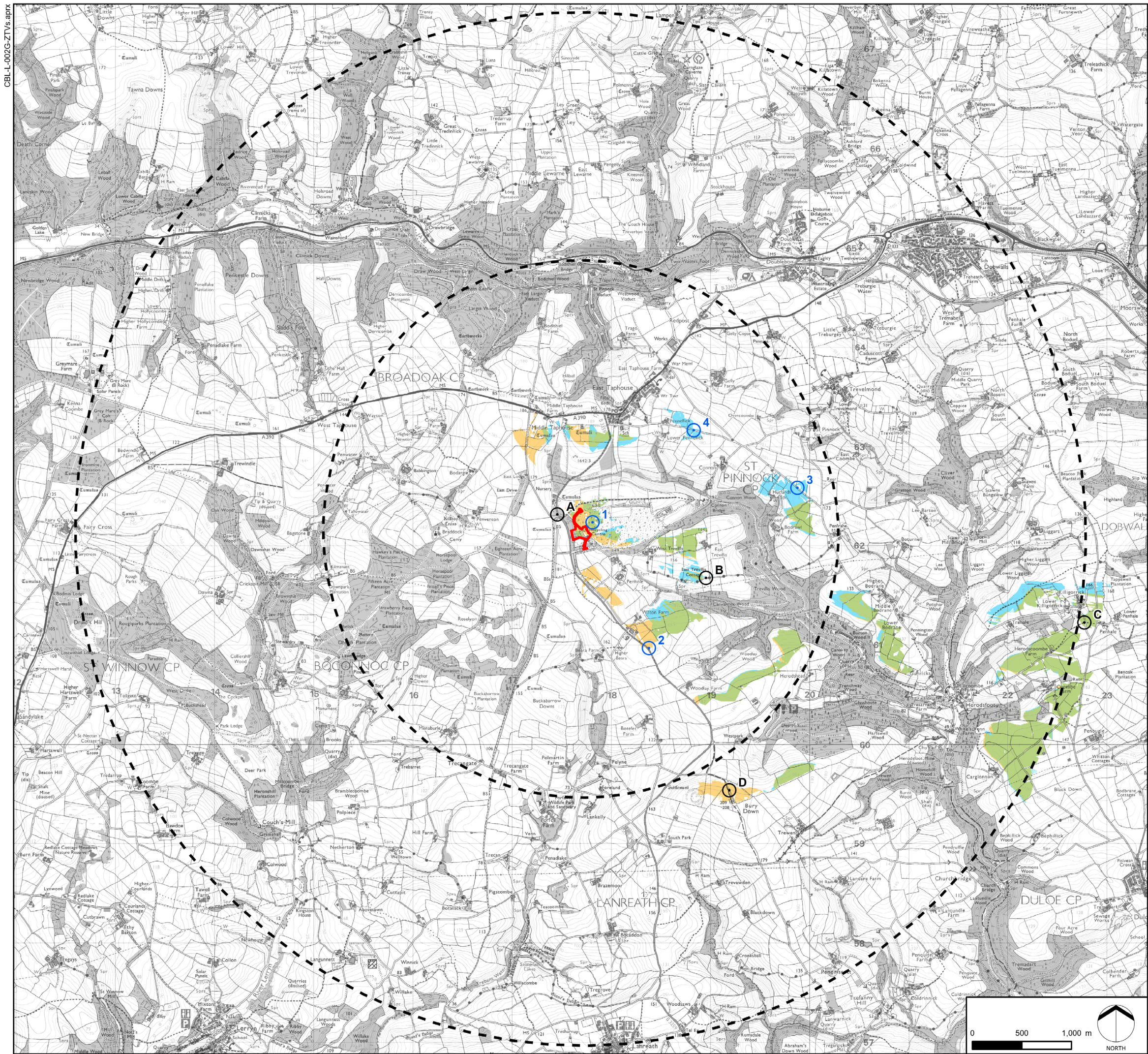


Projected Coordinate System: British National Grid

DATE	BY	PAPER	SCALE	QA	REV
DEC 2020	MP	A3	1:9,000	ME	-

CONNON BRIDGE

FIGURE 9.3
Zone of Theoretical Visibility with Screening
Effect of Woodland and Settlement



KEY

- Proposed Site Boundary
- Distance Radii from Site (2.5, 5km)
- Viewpoints
 - Illustrative
 - Representative
- Woodland (modelled at 10m)
- Buildings (modelled at 7.5m)

Zone of Theoretical Visibility

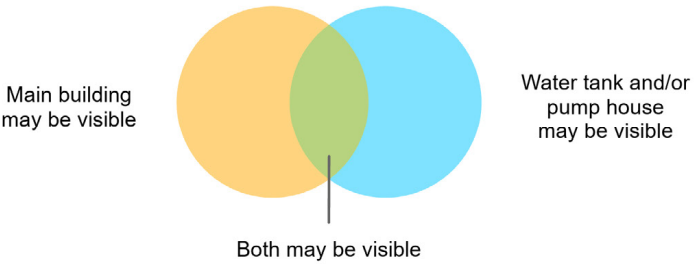


FIGURE DATA:
This figure has been based on the following data:

Layout file: obvs-proposed-dev-T5-5km.shp
Terrain data: OS-T5-DSM-screening.asc
Viewer's eye height: 2m above ground level
Calculation grid size: 5m

NOTES:
This drawing is based upon computer generated Zone of Theoretical Visibility (ZTV) studies produced using the Viewshed routine in the Visibility Analysis plugin for QGIS.

The areas shown are the maximum theoretical visibility, taking into account topography, principal woodlands and buildings.

A digital surface model (DSM) has been derived from OS Terrain 5 height data with the locations of woodland and buildings taken from the OS Open Map Local dataset. Buildings have been modelled with an assumed height of 7.5m and woodland an assumed height of 10m, representing a conservative estimate of average heights within the study area.

The model does not take into account some localised features such as small copses, hedgerows or individual trees and therefore still gives an exaggerated impression of the extent of visibility. The actual extent of visibility on the ground will be less than that suggested by this plan.

The ZTV includes an adjustment that allows for Earth's curvature and light refraction. It is based on a derived DSM and has a 5m² resolution.

Projected Coordinate System: British National Grid

DATE	BY	PAPER	SCALE	QA	REV
DEC 2020	MP	A3	1:37,500	ME	-